

# K-Sophie

SANITARY PAD

*Refreshing  
& Comfortable  
all day long!*

Sanitary pad plays a major role in a woman's life. A lady's intimate friend. The quality of sanitary pads can influence ladies' emotions during period. That is why choosing a suitable sanitary pad is very important.

According to research, when blood on used sanitary pads is exposed to the air, approximately 100,000 bacteria will grow on it in a mere 4 minute. This has been a major factor of various female sicknesses such as itchiness, sensitive skin, inflammation, lower back pain, fatigue, emotionally unstable and others. All these problems are related to the choice of your sanitary pad! There are various types of sanitary pads existing in the market now. So make a wise choice!

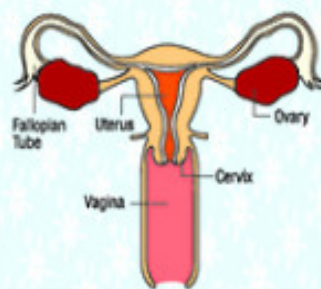
**Using sanitary pads which are not suitable can cause the following effects :**

- ✿ Itchiness, stuffiness at the groin area and sensitive skin.
- ✿ Hurt sensitive skin and accelerate ageing process.
- ✿ Unpleasant smell and vagina inflammation.
- ✿ Urinary tract diseases.

- White discharge (leucorrhoea)
- Unpleasant smell
- Itchiness
- Stuffiness
- Bacteria

Long term effects

- Vagina inflammation
- Fallopian tube inflammation
- Cervix inflammation
- Cervix cancer



**Protect, appreciate and love yourself with K-Sophie sanitary pad!**

K-Sophie sanitary pads and pantliners are made with special formula, combining traditional herbs ingredients with the latest biotechnology-based agent to help reducing ladies' problem caused by bacteria, vagina inflammation, itchiness and odour.



GOLD MEDAL recipient of Innovative Product  
2000 International Exhibition of Inventions in  
Geneva, Switzerland.





# K-Sophie SANITARY PAD

## Choose A Healthy Period :

### The sanitary pad is made of 3 layers :

- ◆ Silky Soft Cover
- ◆ Super Absorbent Filling
- ◆ Transpirable Bottom Layer

#### SUPER ABSORBENT FILLING

Our Unique Super Absorbent Filling is a hyper absorbent layer of paper pulp that efficiently absorbs all moisture. It is a one-piece absorbent layer that keeps you dry and prevents any leakage. It does not deform, disintegrate or twist.



#### SILKY SOFT COVER

Silky Soft Cover is soft and gentle. It absorbs moisture completely and its soft cotton and silky smooth cover prevents any irritation.

#### TRANSPIRABLE BOTTOM LAYER

Super transpirable cover keeps away moisture to keep you fresh and dry.

\* Only for K-Sophie Regular Flow & K-Sophie Overnight

### The pantliner is made of 2 layers :

- ◆ Silky Soft Cover
- ◆ Transpirable Bottom Layer

#### SILKY SOFT COVER

Silky Soft Cover is soft and gentle. It absorbs moisture completely and its soft cotton and silky smooth cover prevents any irritation.



◆ **TRANSPIRABLE BOTTOM LAYER**  
Super transpirable cover keeps away moisture to keep you fresh and dry.

\* Only for K-Sophie Daily Use (Pantliners)

**Materials :** Cotton cover, transpirable bottom layer, paper pulp and adhesive tape.

**K-Sophie**  
SANITARY PAD  
DAILY USE



Specification :  
20 pieces/pack



Length : 17cm



**K-Sophie**  
SANITARY PAD  
REGULAR FLOW



Specification :  
10 pieces/ pack



Length : 24cm



**K-Sophie**  
SANITARY PAD  
OVERNIGHT



Specification :  
10 pieces/pack



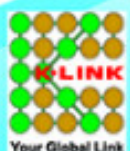
Length : 28cm



\* Reminder : Changing a new sanitary pad every 2 hours is the optimum personal hygiene standard.

### 9 Unique Features of K-Sophie Sanitary Pad

- ◆ **Pure cotton silky soft quilted cover**  
A layer of soft and fine pure cotton to keep you dry, refreshing and comfortable.
- ◆ **Highly absorbent**  
Made of a combination of highly absorbent materials, providing maximum protection with ultimate comfort.
- ◆ **Ultra thin**  
The thickness of each pad is only 0.3mm. It is so thin that you can hardly feel it is there!
- ◆ **Special formula of natural herbs**  
Tested and tried throughout the years using nature's methods to allay the monthly discomfort.
- ◆ **Bio-tech anti-bacterial core**  
It is anti-bacterial with biotechnology and highly absorbent.
- ◆ **Natural breathable materials**  
A natural combination of plant resin and tree extracts for the back sheet.
- ◆ **Refreshing & odourless**  
Refreshing and does not emit odour.
- ◆ **Proof of non-toxicity**  
Microbiologically tested by SGS Taiwan Ltd. as free from toxic materials and heavy metal.
- ◆ **High quality control**  
Made of dust-free protective membrane which effectively absorb moisture and prevent leakage to keep you fresh and dry.



**K-LINK Healthcare (India) Pvt Ltd**

Door No. 103 A, 7th floor, NAVIN'S PRESIDUM,

Nelson Manickam Road, Aminjikarai

Chennai - 600 029.

Ph: 044-42939898.

E-mail: [customercare@klinkindia.in](mailto:customercare@klinkindia.in) Website: [www.klinkindia.in](http://www.klinkindia.in)

Your Global Link